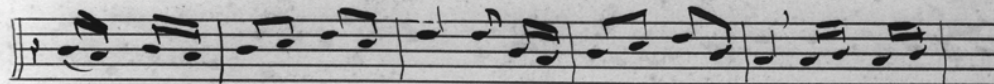
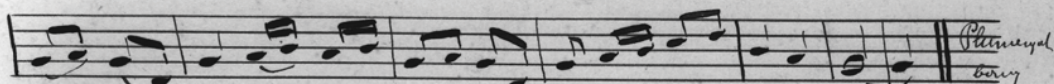


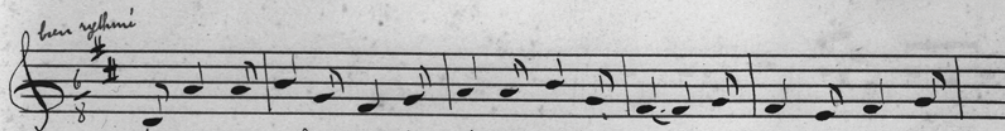
Chi-level ur sonen pleasant sauel ay en ivrogn quant - Chi-level :



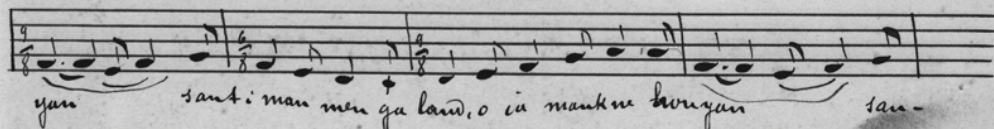
ne - ré n'en doi ket kin sou - si mit-moret d'en hoste - le - ri ri-ge - ri - ga -



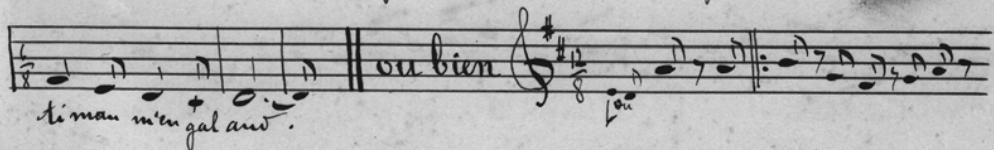
ra lon - la na peh ur uechet e'ho - na foudera ra ra lon - la .



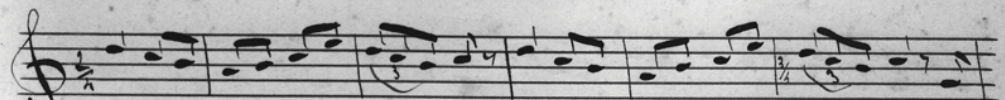
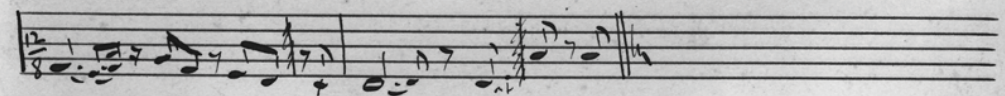
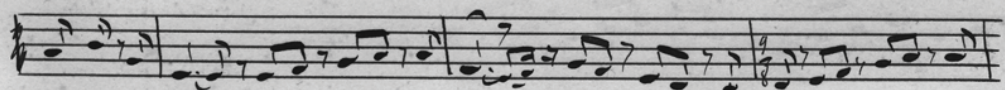
Muyen pœne hra dein kale tan ma kavan , o ia , mant ne hori -



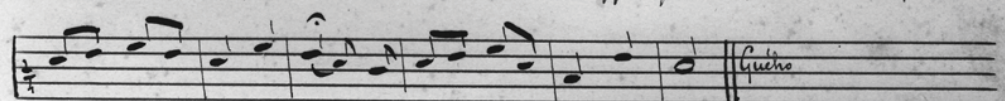
yan sant : man men gal aou , o ia mant ne horiyan san -



ti man men gal aou .



Mi' hori suppli panted kamor , o , me hori suppli panted ka - moro . o , mi



hori suppli panted kamor dit ket d'ur panted de Guého